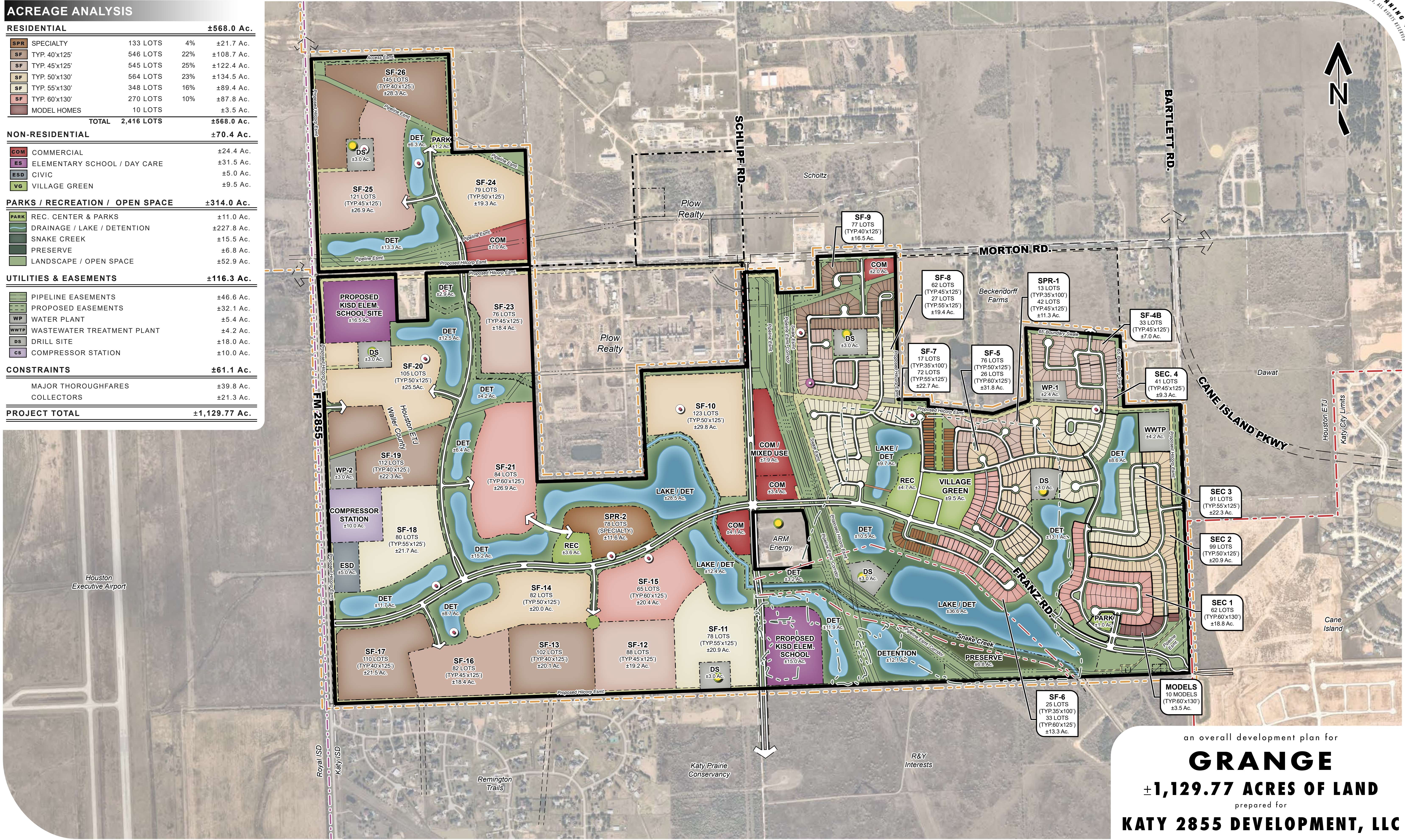


ACREAGE ANALYSIS

RESIDENTIAL				±568.0 Ac.
SPR	SPECIALTY	133 LOTS	4%	±21.7 Ac.
SF	TYP. 40'x125'	546 LOTS	22%	±108.7 Ac.
SF	TYP. 45'x125'	545 LOTS	25%	±122.4 Ac.
SF	TYP. 50'x130'	564 LOTS	23%	±134.5 Ac.
SF	TYP. 55'x130'	348 LOTS	16%	±89.4 Ac.
SF	TYP. 60'x130'	270 LOTS	10%	±87.8 Ac.
	MODEL HOMES	10 LOTS		±3.5 Ac.
TOTAL				2,416 LOTS
				±568.0 Ac.
NON-RESIDENTIAL				±70.4 Ac.
COM	COMMERCIAL			±24.4 Ac.
ES	ELEMENTARY SCHOOL / DAY CARE			±31.5 Ac.
ESD	CIVIC			±5.0 Ac.
VG	VILLAGE GREEN			±9.5 Ac.
PARKS / RECREATION / OPEN SPACE				±314.0 Ac.
PARK	REC. CENTER & PARKS			±11.0 Ac.
	DRAINAGE / LAKE / DETENTION			±227.8 Ac.
	SNAKE CREEK			±15.5 Ac.
	PRESERVE			±6.8 Ac.
	LANDSCAPE / OPEN SPACE			±52.9 Ac.
UTILITIES & EASEMENTS				±116.3 Ac.
	PIPELINE EASEMENTS			±46.6 Ac.
	PROPOSED EASEMENTS			±32.1 Ac.
WP	WATER PLANT			±5.4 Ac.
WWTP	WASTEWATER TREATMENT PLANT			±4.2 Ac.
DS	DRILL SITE			±18.0 Ac.
CS	COMPRESSOR STATION			±10.0 Ac.
CONSTRAINTS				±61.1 Ac.
	MAJOR THOROUGHFARES			±39.8 Ac.
	COLLECTORS			±21.3 Ac.
PROJECT TOTAL				±1,129.77 Ac.



an overall development plan for

GRANGE

±1,129.77 ACRES OF LAND

prepared for

KATY 2855 DEVELOPMENT, LLC

THIS DRAWING IS A GRAPHIC REPRESENTATION FOR PRESENTATION PURPOSES ONLY AND IS NOT FOR COMPUTATION OR CONSTRUCTION PURPOSES. SAID DRAWING IS A SCANNED IMAGE ONLY AND IS SUBJECT TO CHANGE WITHOUT NOTICE. META PLANNING + DESIGN MAY OR MAY NOT INTEGRATE ADDITIONAL INFORMATION PROVIDED BY OTHER CONSULTANTS, INCLUDING BUT NOT LIMITED TO THE TOPICS OF ENGINEERING AND DRAINAGE, FLOODPLAINS, AND/OR ENVIRONMENTAL ISSUES AS THEY RELATE TO THIS DRAWING. NO WARRANTIES, EXPRESSED OR IMPLIED, CONCERNING THE PHYSICAL DESIGN, LOCATION, AND CHARACTER OF THE FACILITIES SHOWN ON THIS MAP ARE INTENDED. ADDITIONALLY, NO WARRANTY IS MADE TO THE ACCURACY OF THE INFORMATION CONTAINED HEREIN.

● ACTIVE WELL
● INACTIVE WELL
● WATER WELL

META
 PLANNING + DESIGN
 SCALE
 0 250 500 1000

24285 Katy Freeway, Ste. 525
 Katy, Texas 77494
 Tel: 281-810-1422
 MTA-54007
 NOVEMBER 28, 2023