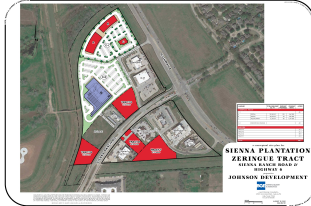


Commercial Land For Sale

Sienna | Missouri City, Texas
Sienna Parkway at Highway 6



SH 6 at Sienna Ranch Rd. Sienna

Prime commercial real estate at the new second entrance into Sienna Plantation off of SH 6 and Sienna Ranch Road. Tracts C-1, C-2 & C-3, as well as tracts 6 and 7, remain available.

Property Details

- ACREAGE 17.7 acres
- LAND USE Pad Sites, Office, Retail, Hotel
- AREA Sugar Land Area
- LOCATION Sienna Parkway at Highway 6

Demographics 2024 Estimate

Population

1 Mile Radius: 6,853
3 Mile Radius: 70,794
5 Mile Radius: 170,831

Average HHI

1 Mile Radius: \$111,220
3 Mile Radius: \$131,649
5 Mile Radius: \$113,444

Traffic Count

SH 6 & Sienna Parkway
50,000 cars per day

Taxing Entities

City
County
School - FBISD
Management District
MUD 2 / MUD 3 / MUD 4 / MUD 6
MUD 10 / MUD 12
LID

Contact Broker

5005 Riverway, Suite 500
Houston, TX 77056
Tel:
JohnsonDevelopment.com

*More top-selling
communities than
any other developer
in Texas!*
2020

Johnson
DEVELOPMENT CORP.



The information contained herein is believed to be correct. However, no warranty or representation is made. All prices are subject to change without notice and property is subject to prior lease, sale or withdrawal from the market without notice.