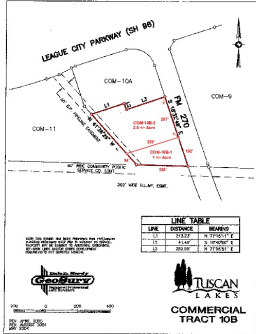


# Commercial Land For Sale

Tuscan Lakes | League City, Texas  
SH 96 (League City Parkway) at FM 270 (South Egret Bay Blvd.)



## Demographics 2020 Estimate

### Population

1 Mile Radius: 7,086  
3 Mile Radius: 72,397  
5 Mile Radius: 162,073

### Average HHI

1 Mile Radius : \$111,319  
3 Mile Radius : \$109,799  
5 Mile Radius : \$106,692

### Traffic Count

FM 270 at SH 96 / SH 96 at FM270  
24,800 / 22,300 cars per day

### Taxing Entities

League City, Galveston County, Dickinson ISD or Clear Creek ISD, and MUD

## COM-10B Tuscan Lakes

Commercial land with frontage on FM 270 just south of the CVS.

### Property Details

- ACREAGE 3.57 acres
- LAND USE Pad Sites, Office, Retail
- AREA Clear Lake Area
- LOCATION SH 96 (League City Parkway) at FM 270 (South Egret Bay Blvd.)



## Contact Broker

Jennifer Johnson  
Vice President of Commercial Sales  
jennifer@johnsondev.com

5005 Riverway, Suite 500  
Houston, TX 77056  
Tel: 713.960.9977  
JohnsonDevelopment.com

More top-selling communities than any other developer in America! 2013, 2014, 2015, 2016 and... Once again, 2017!

**JDC** Johnson Development Corp.

©2017 JDC Johnson Development Corp. All Rights Reserved.



The information contained herein is believed to be correct. However, no warranty or representation is made. All prices are subject to change without notice and property is subject to prior lease, sale or withdrawal from the market without notice.