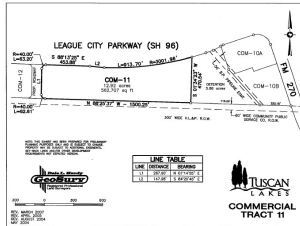


Commercial Land For Sale

Tuscan Lakes | League City, Texas
SH 96 (League City Parkway) at FM 270 (South Egret Bay Blvd.)



Demographics 2021 Estimate

Population

1 Mile Radius: 7,152
3 Mile Radius: 74,401
5 Mile Radius: 163,933

Average HHI

1 Mile Radius : \$117,296
3 Mile Radius : \$114,299
5 Mile Radius : \$109,314

Traffic Count

FM 270 at SH 96 / SH 96 at FM270
24,800 / 22,300 cars per day

Taxing Entities

League City, Galveston County, Dickinson ISD or
Clear Creek ISD, and MUD

COM-11 Tuscan Lakes

Prime commercial real estate just north of the new Regional City Park with League City Pkwy frontage.

Property Details

- ACREAGE 12.92 acres
- LAND USE Pad Sites, Office, Retail
- AREA Clear Lake Area
- LOCATION SH 96 (League City Parkway) at FM 270 (South Egret Bay Blvd.)



Contact Broker

Jennifer Johnson
Vice President of Commercial Sales
jennifer@johnsondev.com

5005 Riverway, Suite 500
Houston, TX 77056
Tel: 713.960.9977
JohnsonDevelopment.com

More top-selling
communities than
any other developer
in Texas!
2020

Johnson
DEVELOPMENT CORP.



The information contained herein is believed to be correct. However, no warranty or representation is made. All prices are subject to change without notice and property is subject to prior lease, sale or withdrawal from the market without notice.