



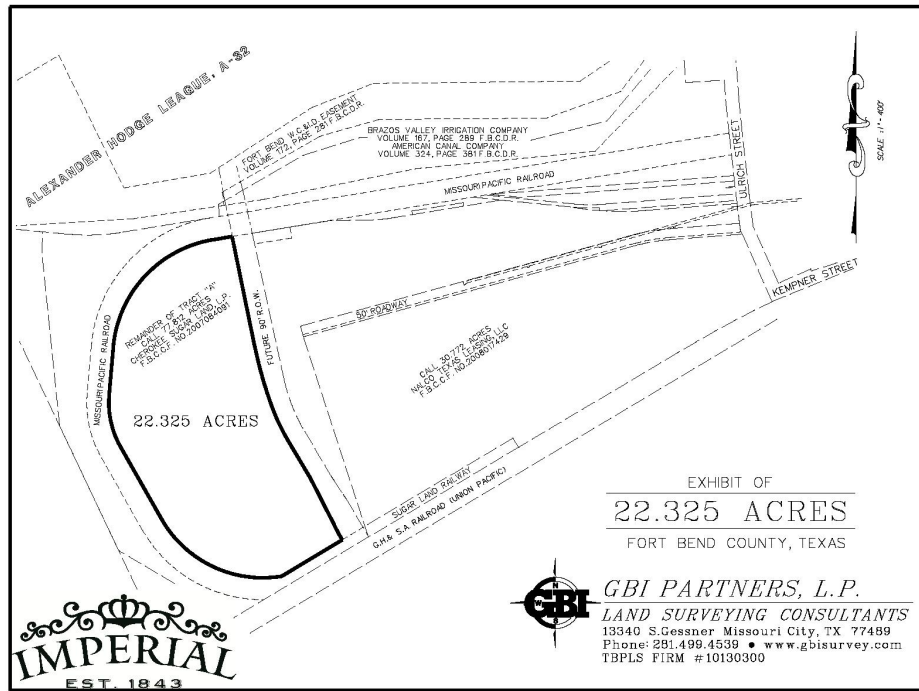
## Area of DMA Sugar Land Area

[View Larger Map](#)



Jennifer Johnson  
Vice President of  
Commercial Sales  
[jennifer@johnsondev.com](mailto:jennifer@johnsondev.com)

5005 Riverway, Suite 500  
Houston, Texas 77056  
Tel: 713.960.9977  
Fax: 713.960.9978



# NAL - 2 & NAL - 3 (Tract A) Imperial

Excellent commercial land with frontage on US 90A at the future University Blvd. extension.

## LOCATION

Highway 6 at Highway 90A

## ACREAGE

22.325 acres

## DEMOGRAPHICS

Population (2016 Estimate)

1 Mile Radius: 2,951

3 Mile Radius: 79,909

5 Mile Radius: 272,485

## LAND USE

Office

Industrial

## Average HHI (2016 Estimate)

1 Mile Radius : \$110,776

3 Mile Radius : \$121,166

5 Mile Radius : \$106,556

## Traffic Counts (Cars per Day)

Highway 6 and Highway 90A: 70,000

## TAXING ENTITIES INCLUDE

Fort Bend County

Fort Bend ISD

City of Sugar Land

MMD

MUD

The information contained herein is believed to be correct. However, no warranty or representation is made. All prices are subject to change without notice and property is subject to prior lease, sale or withdrawal from the market without notice.