



## Area of DMA

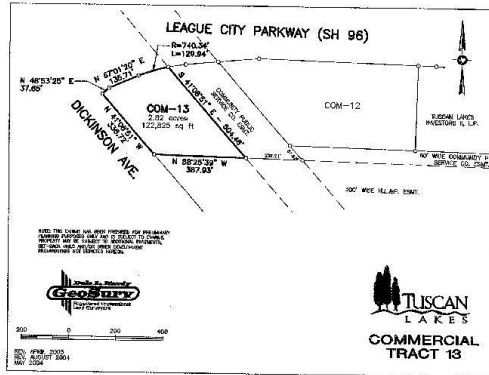
Clear Lake Area

[View Larger Map](#)



Jennifer Johnson  
Vice President of  
Commercial Sales  
[jennifer@johnsondev.com](mailto:jennifer@johnsondev.com)

5005 Riverway, Suite 500  
Houston, Texas 77056  
Tel: 713.960.9977  
Fax: 713.960.9978



# COM-13 Tuscan Lakes

Prime commercial real estate just north of the new Regional City Park with League City Pkwy frontage.

## LOCATION

SH 96 (League City Parkway) at FM 270  
(South Egret Bay Blvd.)

## ACREAGE

2.82 acres

## DEMOGRAPHICS

Population (2020 Estimate)  
1 Mile Radius: 7,086  
3 Mile Radius: 72,397  
5 Mile Radius: 162,073

## LAND USE

Pad Sites  
Office  
Retail

## Average HHI (2020 Estimate)

1 Mile Radius : \$111,319  
3 Mile Radius : \$109,799  
5 Mile Radius : \$106,692

## Traffic Counts (Cars per Day)

FM 270 at SH 96 / SH 96 at FM270: 24,800 / 22,300

## TAXING ENTITIES INCLUDE

League City, Galveston County, Dickinson ISD or Clear Creek ISD, and MUD

The information contained herein is believed to be correct. However, no warranty or representation is made. All prices are subject to change without notice and property is subject to prior lease, sale or withdrawal from the market without notice.