

L:\Projects\ncwid96\09600\Remaining Commercial\Fall Creek Commercial Between Wilson & Bellows Falls\Meso_Rd_Nursing_Home_Exhibit_11-7-2017.dwg 1:1

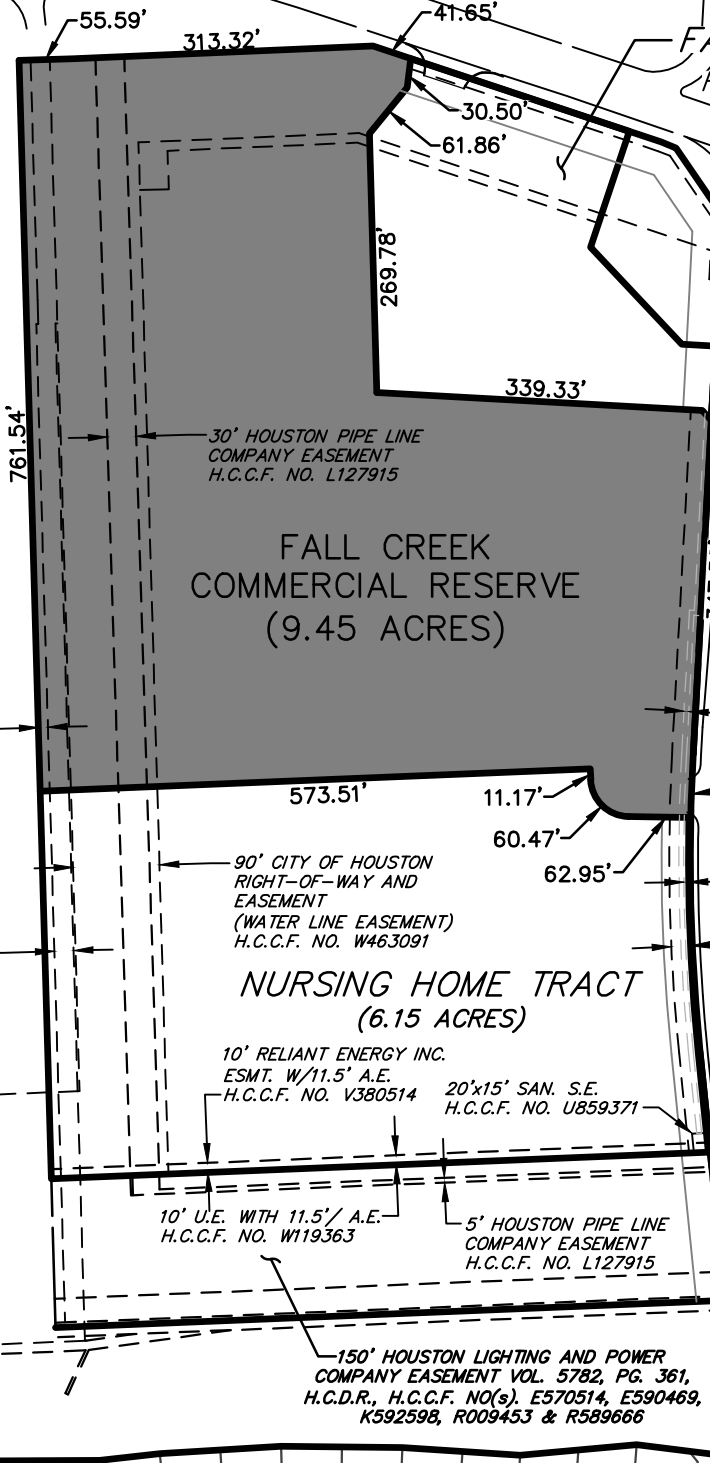
NORTH BELT RESERVE "A"
SUBDIVISION RESTRICTED RESERVE "A"
F.C. NO. 631177, H.C.M.R.

FERDINAND BELL 1/3 LEAGUE A-115

FALL CREEK CVS PHARMACY
FILM CODE No. 577070, H.C.M.R.

FALL CREEK KIDS R KIDS
FILM CODE No. 579116, H.C.M.R.

BELTWAY 8
NORTH SAM HOUSTON PARKWAY
(WIDTH VARIES)



FALL CREEK BANK/ RETAIL RESERVE
FILM CODE No. 577062, H.C.M.R.

REMAINDER OF 31.83 ACRES
FALL CREEK INVESTORS No. 3, L.P.
H.C.C.F. No. V544479

FALL CREEK CHILDCARE FACILITY
FILM CODE No. 577066, H.C.M.R.

FALL CREEK SEC. 1

FALL CREEK SEC. 2



BGE, Inc.
10777 Westheimer, Suite 400, Houston, TX 77042
Tel: 281-558-8700 • www.bgeinc.com
TBPE Registration No. F-1046

FALL CREEK COMMERCIAL TRACTS

Scale: 1"=200'	Job No.: 560-00	Date: NOV. 2017	Exhibit: 1 OF 1
-------------------	--------------------	--------------------	--------------------