

LAND USE ANALYSIS

DEVELOPABLE ± 2,609 LOTS ± 641.0 Ac.

SF	TYP. 40'x125'	±334 LOTS	±64.9 Ac.
SF	TYP. 42'x120'	±46 LOTS	±8.7 Ac.
SF	TYP. 45'x125'	±539 LOTS	±117.0 Ac.
SF	TYP. 50'x125'	±584 LOTS	±127.2 Ac.
SF	TYP. 55'x125'	±558 LOTS	±145.7 Ac.
SF	TYP. 60'x125'	±266 LOTS	±96.9 Ac.
SF	TYP. 65'x125'	±130 LOTS	±18.0 Ac.
SF	TYP. 60A'x135'	±84 LOTS	±35.9 Ac.
SF	TYP. 70'x130'	±60 LOTS	±23.2 Ac.
SF	MODELS	±8 LOTS	±3.5 Ac.

NON-RESIDENTIAL ± 95.8 Ac.

COM	COMMERCIAL	±32.5 Ac.
SCH	ELEMENTARY & JUNIOR HIGH SCHOOL	±51.0 Ac.
VG	VILLAGE GREEN	±12.3 Ac.

PARKS / RECREATION / OPEN SPACE ± 308.8 Ac.

PARK	REC. CENTER & PARKS	(0.3%)	±3.5 Ac.
DR	DRAINAGE / DETENTION	(18.8%)	±231.0 Ac.
CH	CHANNEL	(0.7%)	±9.1 Ac.
SC	SNAKE CREEK	(1.6%)	±19.4 Ac.
PR	PRESERVE	(0.6%)	±6.8 Ac.
LS	LANDSCAPE / OPEN SPACE	(3.2%)	±39.0 Ac.

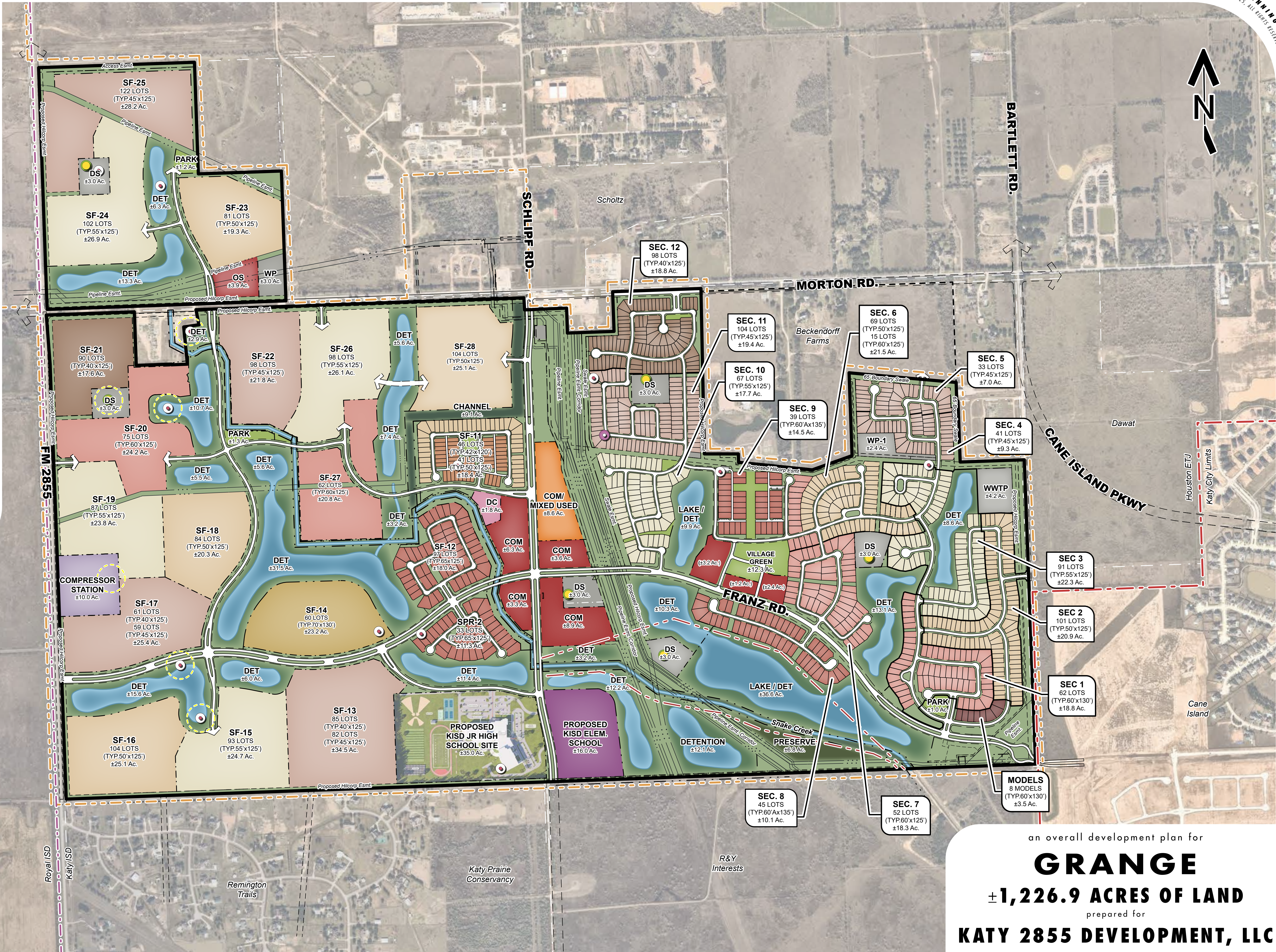
UTILITIES ±130.7 Ac.

PE	PIPELINE EASEMENTS	±61.0 Ac.
HE	HILCORP EASEMENTS	±32.1 Ac.
CP	COMPRESSOR	±10.0 Ac.
WP	WATER PLANT	±5.4 Ac.
WWTP	WASTEWATER TREATMENT PLANT	±4.2 Ac.
DS	DRILL SITE	±18.0 Ac.

CONSTRAINTS ±50.6 Ac.

MT	MAJOR THOROUGHFARES	(2.5%)	±32.2 Ac.
CS	COLLECTOR STREETS	(1.4%)	±18.4 Ac.

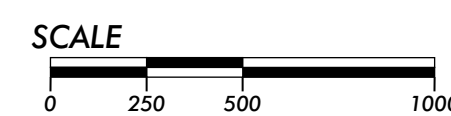
PROJECT TOTAL ±1,226.9 Ac.



an overall development plan for
GRANGE
±1,226.9 ACRES OF LAND
prepared for
KATY 2855 DEVELOPMENT, LLC



24285 Katy Freeway, Ste. 525
Katy, Texas 77494
Tel: 281-810-1422



MTA-54007
MAY 14, 2025

THIS DRAWING IS A GRAPHIC REPRESENTATION FOR PRESENTATION PURPOSES ONLY AND IS NOT FOR COMPUTATION OR CONSTRUCTION PURPOSES. SAID DRAWING IS A SCANNED IMAGE ONLY AND IS SUBJECT TO CHANGE WITHOUT NOTICE. META PLANNING + DESIGN MAY OR MAY NOT INTEGRATE ADDITIONAL INFORMATION PROVIDED BY OTHER CONSULTANTS, INCLUDING BUT NOT LIMITED TO THE TOPICS OF ENGINEERING AND DRAINAGE, FLOOD PLAINS, AND/OR ENVIRONMENTAL ISSUES AS THEY RELATE TO THIS DRAWING. NO WARRANTIES, EXPRESSED OR IMPLIED, CONCERNING THE PHYSICAL DESIGN, LOCATION, AND CHARACTER OF THE FACILITIES SHOWN ON THIS MAP ARE INTENDED. ADDITIONALLY, NO WARRANTY IS MADE TO THE ACCURACY OF THE INFORMATION CONTAINED HEREIN.

© 2025 META PLANNING + DESIGN, ALL RIGHTS RESERVED

- ACTIVE WELL
- INACTIVE WELL
- WATER WELL